

6 k e n n y v a l e



## the site

Nestled in the gated property Kenny Vale in Bukit Tunku surrounded by lush green as if you are in forest environment but yet within the vicinity of Kuala Lumpur. The site is carved within a valley and undulating topography which allows a play of form to capture the essence of the desired design.



# design concept

The layout is conceptualised by maximizing the plinth and inducing open areas as courtyards and water bodies to create a domain that sits comfortably within the natural setting. A modern outlook with less frills and one single colour is adopted to create the contrast among the green setting. In short the design managed to capture all the advantages within the environment without sacrificing the beauty of the place.



# the plan

The layout is designed with two linear blocks running parallel within the site boundaries connected with bridges to complete a well defined circulation. The spaces are carefully placed to create a sense of hierarchy capturing desired ambience and practicality. Simplicity has been adopted throughout the layout to enable the residence to move easily from any part of the house. By creating courtyards and breezeway in between the spaces further enhance the quality of natural lighting and ventilation. On the upper floors the plans runs parallel to the lower floors to maximize the plinth and captures lateral level views . Two staircases is introduced from one corner to the other allowing options of circulation within a shorter distance to desired spaces. Vertical circulation is made easier with an elevator located centrally to serve all the spaces . Swimming pool sits strategically on a location that acts as a focal point to the house and sets the mood for the living, dining and rumpus.









# the form

Emphasis is given to the overall form of the building with layers of roof rising up proportionally. The form generates horizontal expression to ease off the overall height of the building. Contemporary approach with large overhangs takes a new meaning in tropical architecture. Large planes and feature walls are introduced to give a feel of light and shadow without jeopardizing the aesthetics of the building. Fenestration through large windows shapes the façade of the building adding an interplay of solid and void. The buildings appears transparent on lower floors to capitalize lush greens views within the enclosure. The roof floats above the solid frames of the building and gives an impression of light and sleek and further enhanced by artificial lighting during nights.

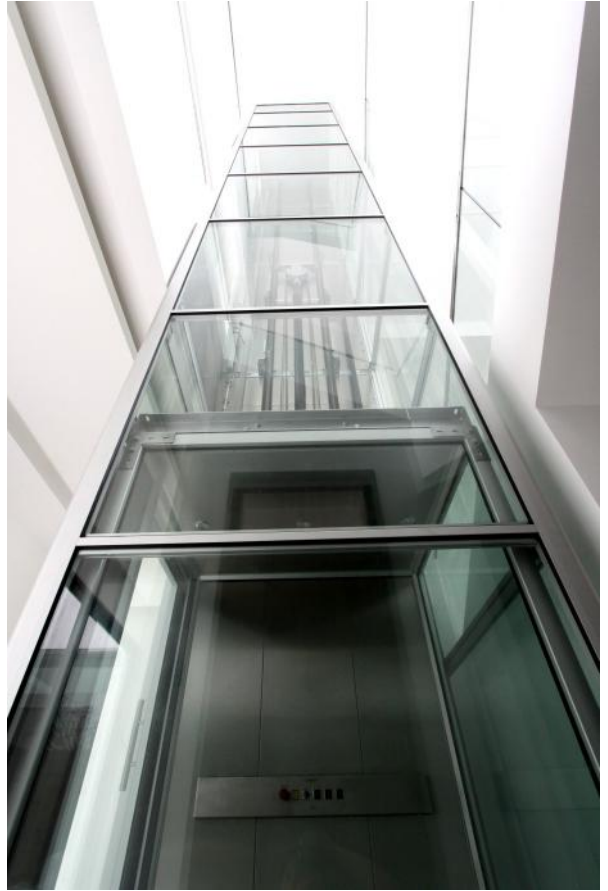
# the structure

Generally the structure is well hidden in between walls and ceiling, and spanning across long open spaces to maximize uninterrupted views for most of the spaces. Reinforced concrete frames and solid timber post is the main structural members of the building . The feature roof is supported with timber post vertically and sits on concrete beams. The ground floors slabs are suspended to ensure an independent structure to the advantage of the floor. A feature staircase is introduced at the rumpus acts as a sculpture and functionally appropriate.









# the material

Three key natural material is exposed on the overall design , timber, natural stone and marble. The idea of not having too many material is to keep the design simple and elegant . generally the walls are painted white to keep in line with our simplicity approach on the design but yet soulful.









## the landscape

The site is sitting in natural green environment thus it was minimal effort on the landscape due to the advantages. Focus was on the raw hardscape and the courtyard since it becomes the heart of the house. Fresh green turfing and strategically placed frangipani enhance the overall ambience of the house.

Unique form of frangipani and other plants are carefully selected for sculpture planting to add characters in the landscape. Perimeter screening plants preserve privacy of indoor and outdoor space. White garden sculpture furniture by VONDOM (Spain) designed by the best designers in the world are highlighted as main landscape decoration.



# the lighting

Collaboration of lighting and Home Smart System by CLIPSAL (Australia) intends to create different ambience and scenes, which turns light into a means to improve the quality of life. Well planned and designed lighting illuminates space, activities and needs inside a space, indoor and outdoor, complying with individual moods. Decorative light fittings ARTEMIDE (Italy) designed by international designers are selected to equip main spaces, creating new modern lighting design.





2. Liberty House













# facts & specifications

## FACTS

Type	2 ½ Storey Modern Boutique Bungalow	Room	7+1
Location	6 Kenny Vale, Bukit Tunku, Kuala Lumpur	Bath	7+1
Land Size	11,981 sf	Powder	2
Built up	Approx. 11,075 sf	Car Porch	6 Covered

## FLOOR FINISHES

Driveway	Cobble Stone
Car Porch & Pool Deck	Granite Stone
Yard	Homogeneous Tile
Living, Dining, Dry Kitchen, Stairs & Others	Marble (VOLAKAS from Greece)
Bedrooms, Family & Study	Pre-finish Solid Merbau Multi-strip
Wet Kitchen & Laundry	Homogeneous Tile
Bathrooms & Powder	Homogeneous Tile

## WALL FINISHES

External Stone Cladding	Granite Stone
Bathrooms & Wet Kitchen	Porcelain Tile & Marble

## OTHER FEATURES AND MATERIALS

Swimming Pool	Home Smart System by CLIPSAL (Australia)
Lift by DOMUSLIFT (Italy)	Bathrooms Fittings by DORNBRACHT (Germany)
Solar Heater by SUMMER	Sanitary Fittings by VILLEROY & BOCH, ALAPE, HOESCH (Germany)
Water Pump by GRUNDFOS	Roofing System by BLUESCOPE LYSACHT (Australia)
Water Filter	Kitchen Cabinet by ZEYKO (Germany)
Security Alarm System & CCTV	Decorative Lighting by ARTEMIDE (Italy)
Centralised Vacuum System by ELECTROLUX	
Fully Air-Conditioned	
Own Guard House	
150Amp 3-Phase Power Supply	

